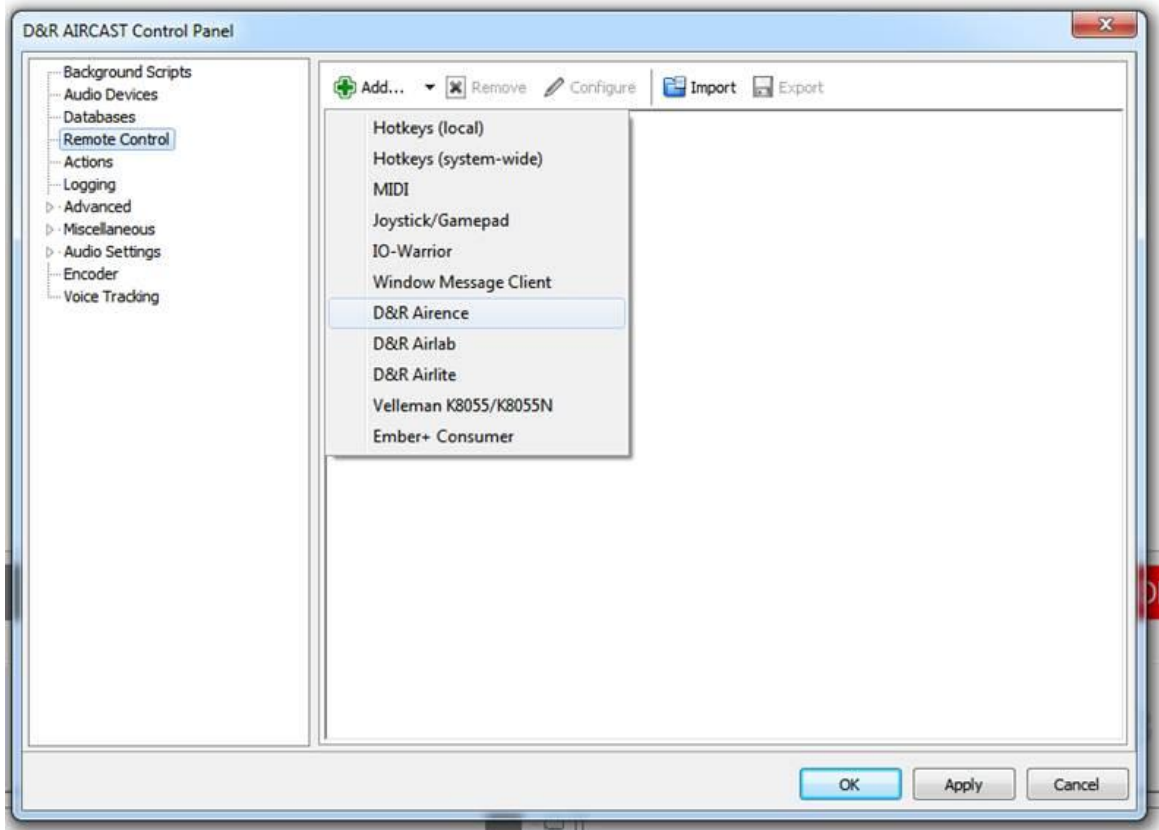


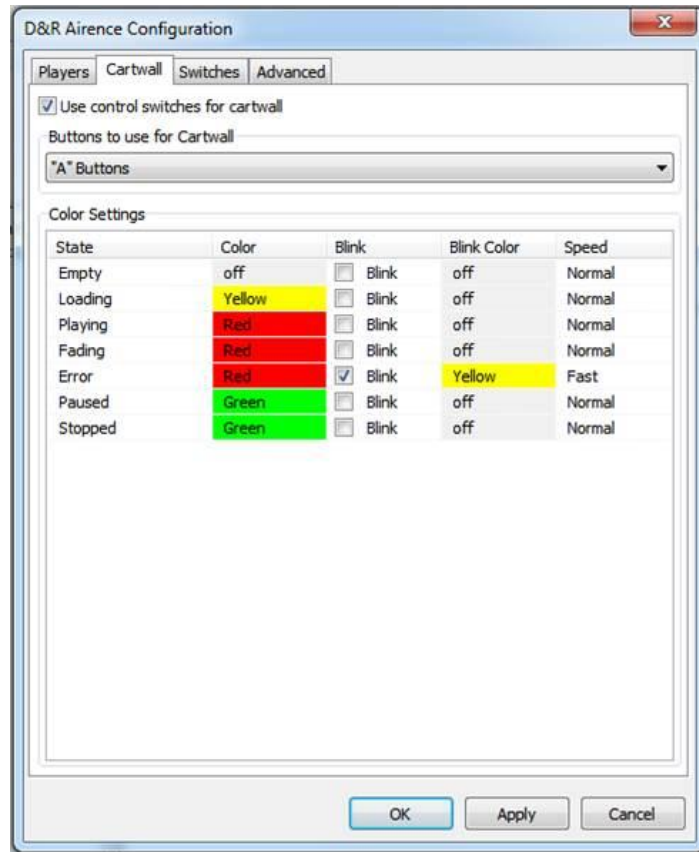
How to control AIRCAST in the AIRENCE mixer

It is not needed to use the keyboard mapper to be able to control Aircast.

Under **Control Panel** -> **Remote Control** you can **Add(+)** a *D&R Airence* remote control.



In the tab **Cartwall** make sure the checkbox 'Use control switches for cartwall' is checked.



In the tab *Players* assign a usb channel for each player. Faderstarts start/stop the players.

